

### 环形滤波电感

Leaded Toroidal Line Choke



可定制不同感值&线径&更改成卧式

Custom make available for difference inductance, wire diameter and horizontal of the core

#### 特性

Characteristics

低损耗铁粉磁芯

Iron powder cores with low losses

低漏磁场

Low magnetic leakage field

电流负载高达9 A

Current loading up to 9 A

定制设计的要求

Custom designs on request

#### 应用

Application

在电压互感器和电源中的应用

Application in voltage transformers and power supplies

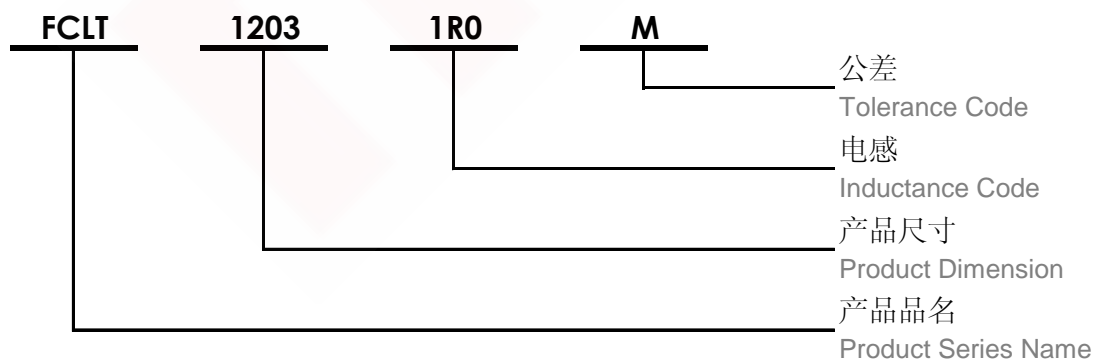
对于高达10 MHz的干扰频率;

用于开关频率高达100 kHz

For interference frequencies up to 10 MHz; for switching frequencies up to 100 kHz

#### 产品品名介绍

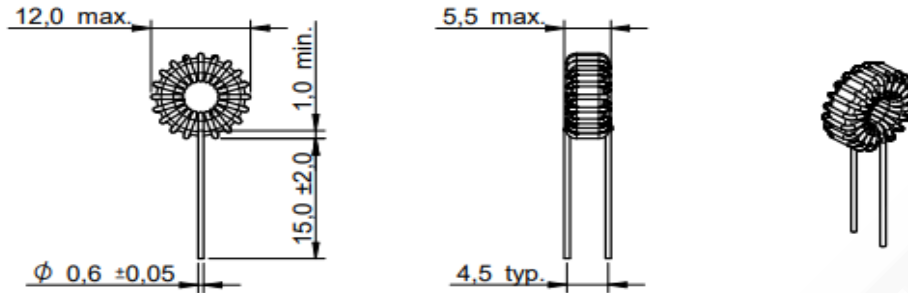
Product Number Structure





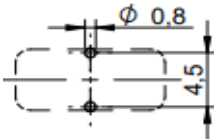
### 尺寸

Dimension (mm)



### 焊盘推荐

Land Pattern Recommended (mm)



### 示意图

Schematics



### 电性特性

Electrical Properties

型号 Part No.	电感值 Inductance L (μH)	直流电阻 DCResistance DCRmax (mΩ)	温升电流 Rated Current I <sub>R</sub> max (A)
FCLT1215-8R2M	8.20 ±20%	11.00	5.00

### 测试状态

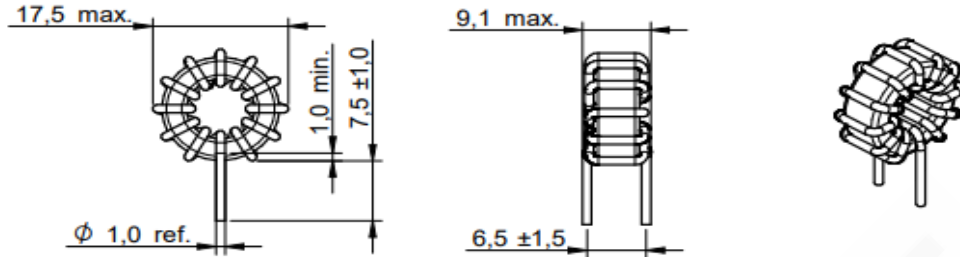
Test Condition

- ☆ 电感测试条件为 10KHz / 5.0mA (25°C)  
Inductance measure condition at 10KHz / 5.0mA (25°C)
- ☆ 工作温度: -40°C ~ +105°C  
Operating Temperature: -40°C ~ +105°C
- ☆ 温升电流: 使产品温度上升到ΔT40°C时所加载的实际直流电流值 (Ta=25°C)。  
Rated Current: The actual value of DC current when the temperature rise is ΔT40°C (Ta=25°C)



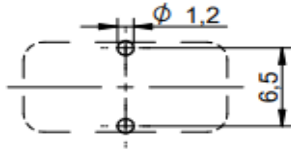
### 尺寸

Dimension (mm)



### 焊盘推荐

Land Pattern Recommended (mm)



### 示意图

Schematics



### 电性特性

Electrical Properties

型号 Part No.	电感值 Inductance L (μH)	直流电阻 DCResistance DCRmax (mΩ)	温升电流 Rated Current I <sub>R</sub> max (A)
FCLT1707-100M	10.00 ±20%	0.01	8.00

### 测试状态

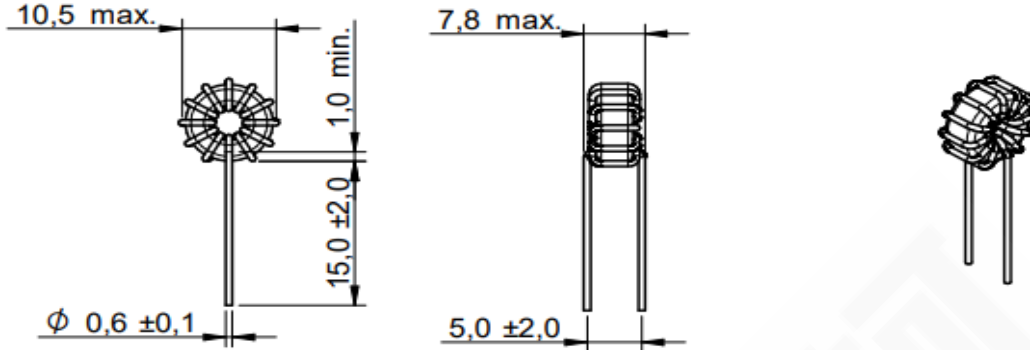
Test Condition

- ☆ 电感测试条件为 10KHz / 5.0mA (25°C)  
Inductance measure condition at 10KHz / 5.0mA (25°C)
- ☆ 工作温度: -40°C ~ +105°C  
Operating Temperature: -40°C ~ +105°C
- ☆ 温升电流: 使产品温度上升到ΔT40°C时所加载的实际直流电流值 (Ta=25°C)。  
Rated Current: The actual value of DC current when the temperature rise is ΔT40°C (Ta=25°C)



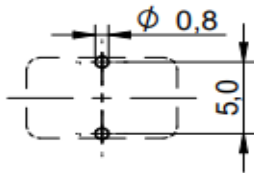
### 尺寸

Dimension (mm)



### 焊盘推荐

Land Pattern Recommended (mm)



### 示意图

Schematics



### 电性特性

Electrical Properties

型号 Part No.	电感值 Inductance L (μH)	直流电阻 DCResistance DCRmax (mΩ)	温升电流 Rated Current I <sub>R</sub> max (A)
FCLT1015-100M	10.00 ±20%	0.02	5.00

### 测试状态

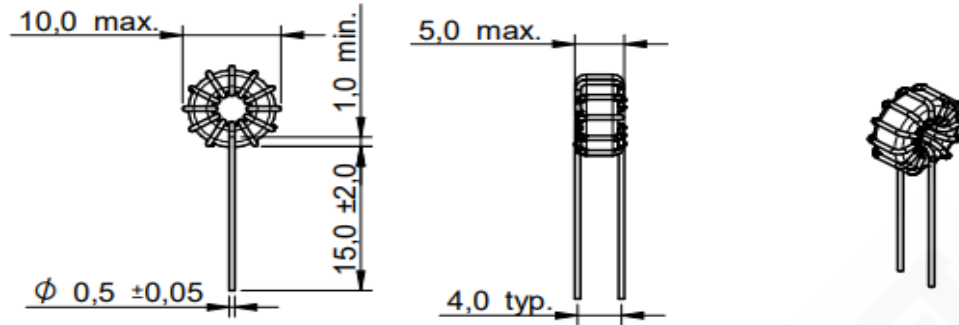
Test Condition

- ☆ 电感测试条件为 10KHz / 5.0mA (25°C)  
Inductance measure condition at 10KHz / 5.0mA (25°C)
- ☆ 工作温度: -40°C ~ +105°C  
Operating Temperature: -40°C ~ +105°C
- ☆ 温升电流: 使产品温度上升到ΔT40°C时所加载的实际直流电流值 (Ta=25°C)。  
Rated Current: The actual value of DC current when the temperature rise is ΔT40°C (Ta=25°C)



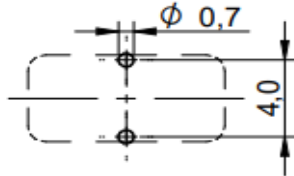
### 尺寸

Dimension (mm)



### 焊盘推荐

Land Pattern Recommended (mm)



### 示意图

Schematics



### 电性特性

Electrical Properties

型号 Part No.	电感值 Inductance L (μH)	直流电阻 DCResistance DCRmax (mΩ)	温升电流 Rated Current I <sub>R</sub> max (A)
FCLT1015-120M	12.00 ±20%	0.03	1.00

### 测试状态

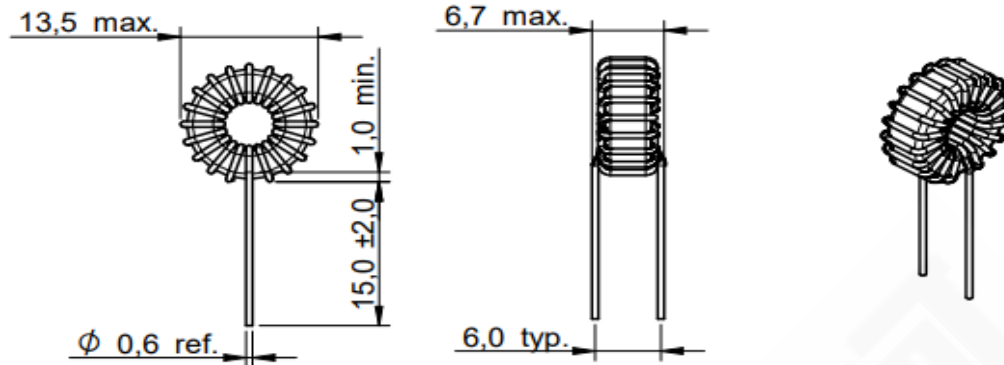
Test Condition

- ☆ 电感测试条件为 10KHz / 5.0mA (25°C)  
Inductance measure condition at 10KHz / 5.0mA (25°C)
- ☆ 工作温度: -40°C ~ +105°C  
Operating Temperature: -40°C ~ +105°C
- ☆ 温升电流: 使产品温度上升到ΔT40°C时所加载的实际直流电流值 (Ta=25°C)。  
Rated Current: The actual value of DC current when the temperature rise is ΔT40°C (Ta=25°C)



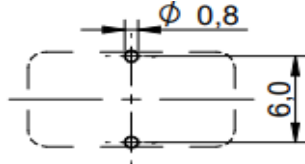
### 尺寸

Dimension (mm)



### 焊盘推荐

Land Pattern Recommended (mm)



### 示意图

Schematics



### 电性特性

Electrical Properties

型号 Part No.	电感值 Inductance L (μH)	直流电阻 DCResistance DCRmax (mΩ)	温升电流 Rated Current I <sub>R</sub> max (A)
FCLT1315-150M	15.00 ±20%	0.025	4.50

### 测试状态

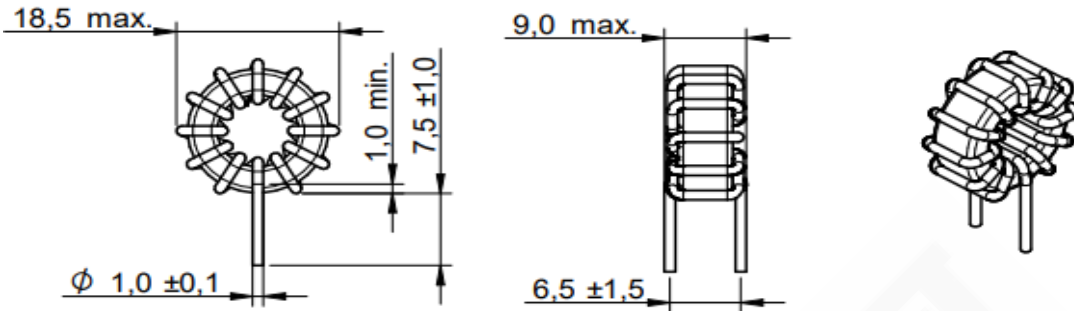
Test Condition

- ☆ 电感测试条件为 10KHz / 5.0mA (25°C)  
Inductance measure condition at 10KHz / 5.0mA (25°C)
- ☆ 工作温度: -40°C ~ +105°C  
Operating Temperature: -40°C ~ +105°C
- ☆ 温升电流: 使产品温度上升到ΔT40°C时所加载的实际直流电流值 (Ta=25°C)。  
Rated Current: The actual value of DC current when the temperature rise is ΔT40°C (Ta=25°C)



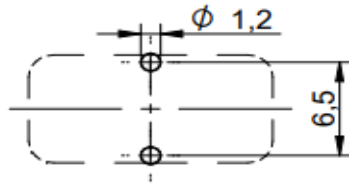
### 尺寸

Dimension (mm)



### 焊盘推荐

Land Pattern Recommended (mm)



### 示意图

Schematics



### 电性特性

Electrical Properties

型号 Part No.	电感值 Inductance L (μH)	直流电阻 DCResistance DCRmax (mΩ)	温升电流 Rated Current I <sub>R</sub> max (A)
FCLT1807-200M	20.00 ±20%	0.015	7.00

### 测试状态

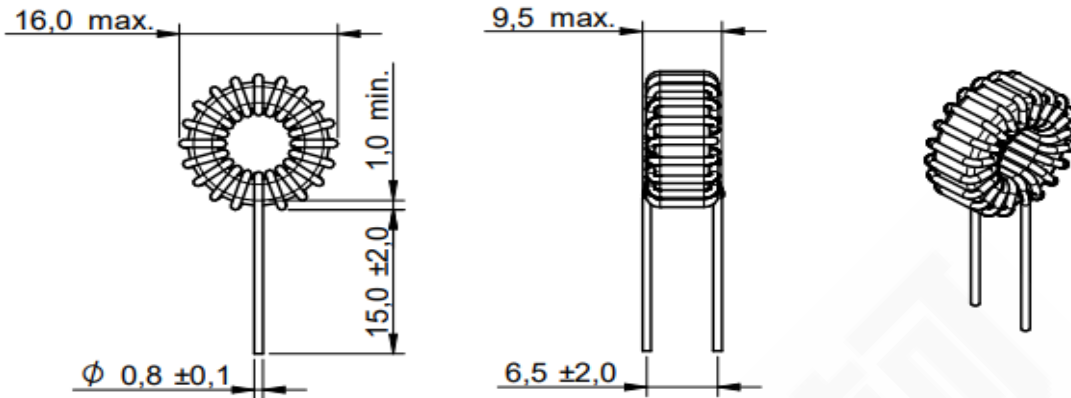
Test Condition

- ☆ 电感测试条件为 10KHz / 5.0mA (25°C)  
Inductance measure condition at 10KHz / 5.0mA (25°C)
- ☆ 工作温度: -40°C ~ +105°C  
Operating Temperature: -40°C ~ +105°C
- ☆ 温升电流: 使产品温度上升到ΔT40°C时所加载的实际直流电流值 (Ta=25°C)。  
Rated Current: The actual value of DC current when the temperature rise is ΔT40°C (Ta=25°C)



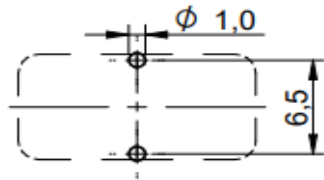
### 尺寸

Dimension (mm)



### 焊盘推荐

Land Pattern Recommended (mm)



### 示意图

Schematics



### 电性特性

Electrical Properties

型号 Part No.	电感值 Inductance L (μH)	直流电阻 DCResistance DCRmax (mΩ)	温升电流 Rated Current I <sub>R</sub> max (A)
FCLT1615-200M	20.00 ±20%	0.020	5.70

### 测试状态

Test Condition

- ☆ 电感测试条件为 10KHz / 5.0mA (25°C)  
Inductance measure condition at 10KHz / 5.0mA (25°C)
- ☆ 工作温度: -40°C ~ +105°C  
Operating Temperature: -40°C ~ +105°C
- ☆ 温升电流: 使产品温度上升到ΔT40°C时所加载的实际直流电流值 (Ta=25°C)。  
Rated Current: The actual value of DC current when the temperature rise is ΔT40°C (Ta=25°C)

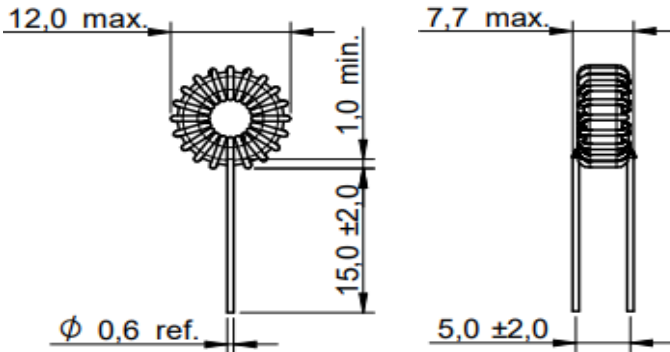




### 尺寸

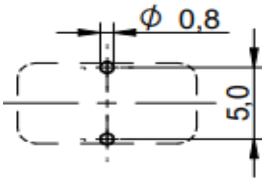
Dimension (mm)

12.0 max.



### 焊盘推荐

Land Pattern Recommended (mm)



### 示意图

Schematics



### 电性特性

Electrical Properties

型号 Part No.	电感值 Inductance L (μH)	直流电阻 DCResistance DCRmax (mΩ)	温升电流 Rated Current I <sub>R</sub> max (A)
FCLT1215-220M	22.00 ±20%	0.030	3.50

### 测试状态

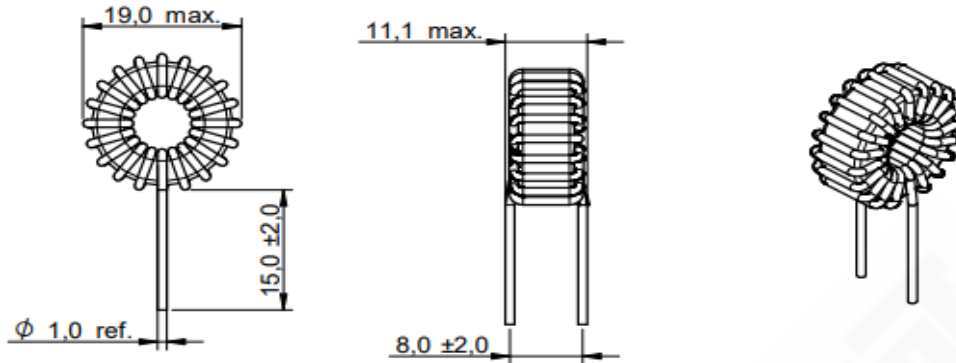
Test Condition

- ☆ 电感测试条件为 10KHz / 5.0mA (25°C)  
Inductance measure condition at 10KHz / 5.0mA (25°C)
- ☆ 工作温度: -40°C ~ +105°C  
Operating Temperature: -40°C ~ +105°C
- ☆ 温升电流: 使产品温度上升到ΔT40°C时所加载的实际直流电流值 (Ta=25°C)。  
Rated Current: The actual value of DC current when the temperature rise is ΔT40°C (Ta=25°C)



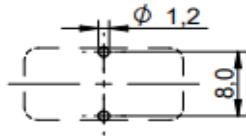
### 尺寸

Dimension (mm)



### 焊盘推荐

Land Pattern Recommended (mm)



### 示意图

Schematics



### 电性特性

Electrical Properties

型号 Part No.	电感值 Inductance L (μH)	直流电阻 DCResistance DCRmax (mΩ)	温升电流 Rated Current I <sub>R</sub> max (A)
FCLT1915-220M	22.00 ±20%	0.015	9.00

### 测试状态

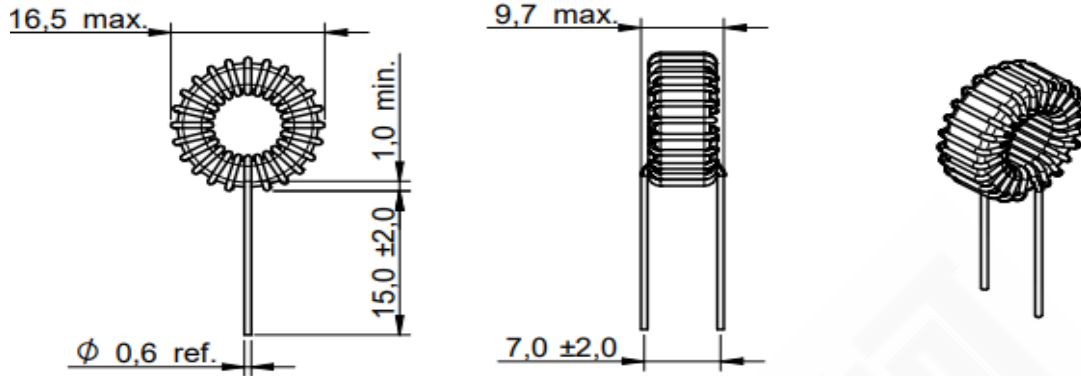
Test Condition

- ☆ 电感测试条件为 10KHz / 5.0mA (25°C)  
Inductance measure condition at 10KHz / 5.0mA (25°C)
- ☆ 工作温度: -40°C ~ +105°C  
Operating Temperature: -40°C ~ +105°C
- ☆ 温升电流: 使产品温度上升到ΔT40°C时所加载的实际直流电流值 (Ta=25°C)。  
Rated Current: The actual value of DC current when the temperature rise is ΔT40°C (Ta=25°C)



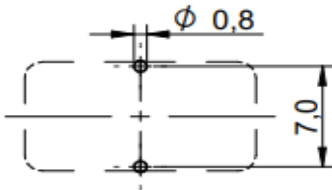
### 尺寸

Dimension (mm)



### 焊盘推荐

Land Pattern Recommended (mm)



### 示意图

Schematics



### 电性特性

Electrical Properties

型号 Part No.	电感值 Inductance L (μH)	直流电阻 DCResistance DCRmax (mΩ)	温升电流 Rated Current I <sub>R</sub> max (A)
FCLT1615-101M	100.00 ±20%	0.080	2.50

### 测试状态

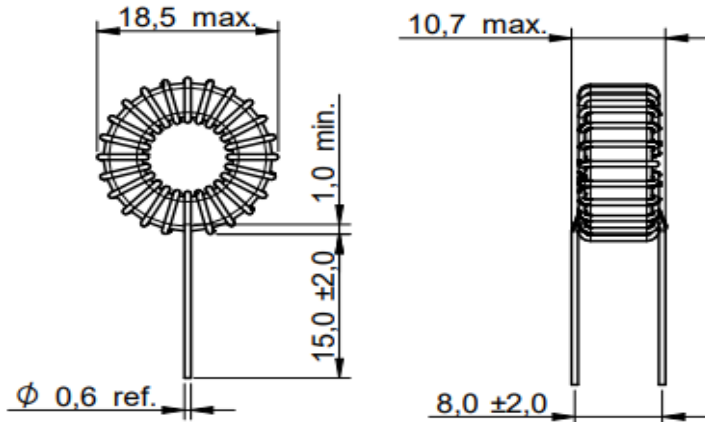
Test Condition

- ☆ 电感测试条件为 10KHz / 5.0mA (25°C)  
Inductance measure condition at 10KHz / 5.0mA (25°C)
- ☆ 工作温度: -40°C ~ +105°C  
Operating Temperature: -40°C ~ +105°C
- ☆ 温升电流: 使产品温度上升到ΔT40°C时所加载的实际直流电流值 (Ta=25°C)。  
Rated Current: The actual value of DC current when the temperature rise is ΔT40°C (Ta=25°C)



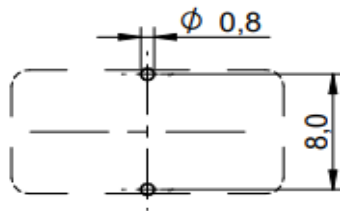
### 尺寸

Dimension (mm)



### 焊盘推荐

Land Pattern Recommended (mm)



### 示意图

Schematics



### 电性特性

Electrical Properties

型号 Part No.	电感值 Inductance L (μH)	直流电阻 DCResistance DCRmax (mΩ)	温升电流 Rated Current I <sub>R</sub> max (A)
FCLT1815-101M	130.00 ±20%	0.085	2.60

### 测试状态

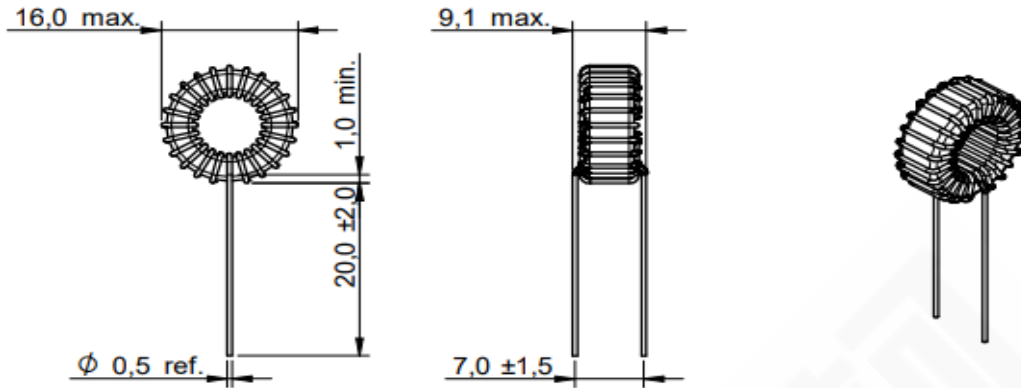
Test Condition

- ☆ 电感测试条件为 10KHz / 5.0mA (25°C)  
Inductance measure condition at 10KHz / 5.0mA (25°C)
- ☆ 工作温度: -40°C ~ +105°C  
Operating Temperature: -40°C ~ +105°C
- ☆ 温升电流: 使产品温度上升到ΔT40°C时所加载的实际直流电流值 (Ta=25°C)。  
Rated Current: The actual value of DC current when the temperature rise is ΔT40°C (Ta=25°C)



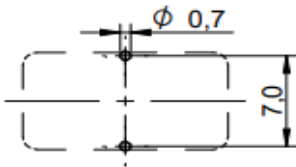
### 尺寸

Dimension (mm)



### 焊盘推荐

Land Pattern Recommended (mm)



### 示意图

Schematics



### 电性特性

Electrical Properties

型号 Part No.	电感值 Inductance L (μH)	直流电阻 DC Resistance DCRmax (mΩ)	温升电流 Rated Current I <sub>R</sub> max (A)
FCLT1620-151M	150.00 ±20%	0.130	1.90

### 测试状态

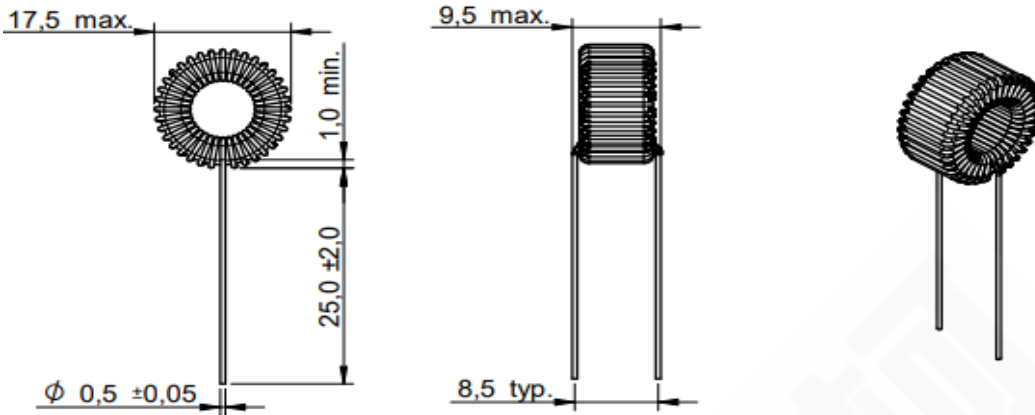
Test Condition

- ☆ 电感测试条件为 10KHz / 5.0mA (25°C)  
Inductance measure condition at 10KHz / 5.0mA (25°C)
- ☆ 工作温度: -40°C ~ +105°C  
Operating Temperature: -40°C ~ +105°C
- ☆ 温升电流: 使产品温度上升到ΔT40°C时所加载的实际直流电流值 (Ta=25°C)。  
Rated Current: The actual value of DC current when the temperature rise is ΔT40°C (Ta=25°C)



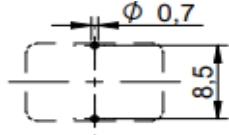
### 尺寸

Dimension (mm)



### 焊盘推荐

Land Pattern Recommended (mm)



### 示意图

Schematics



### 电性特性

Electrical Properties

型号 Part No.	电感值 Inductance L (μH)	直流电阻 DCResistance DCRmax (mΩ)	温升电流 Rated Current I <sub>R</sub> max (A)
FCLT1725-221M	220.00 ±20%	0.150	1.80

### 测试状态

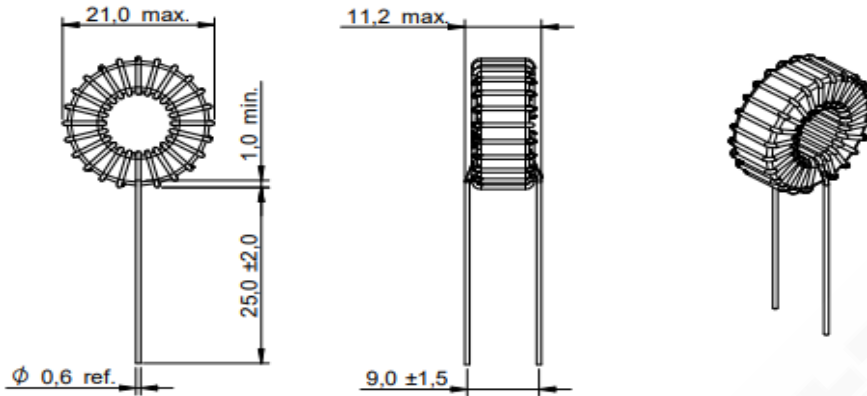
Test Condition

- ☆ 电感测试条件为 10KHz / 5.0mA (25°C)  
Inductance measure condition at 10KHz / 5.0mA (25°C)
- ☆ 工作温度: -40°C ~ +105°C  
Operating Temperature: -40°C ~ +105°C
- ☆ 温升电流: 使产品温度上升到ΔT40°C时所加载的实际直流电流值 (Ta=25°C)。  
Rated Current: The actual value of DC current when the temperature rise is ΔT40°C (Ta=25°C)



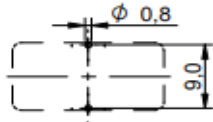
### 尺寸

Dimension (mm)



### 焊盘推荐

Land Pattern Recommended (mm)



### 示意图

Schematics



### 电性特性

Electrical Properties

型号 Part No.	电感值 Inductance L (μH)	直流电阻 DCResistance DCRmax (mΩ)	温升电流 Rated Current I <sub>R</sub> max (A)
FCLT2125-301M	300.00 ±20%	0.150	2.50

### 测试状态

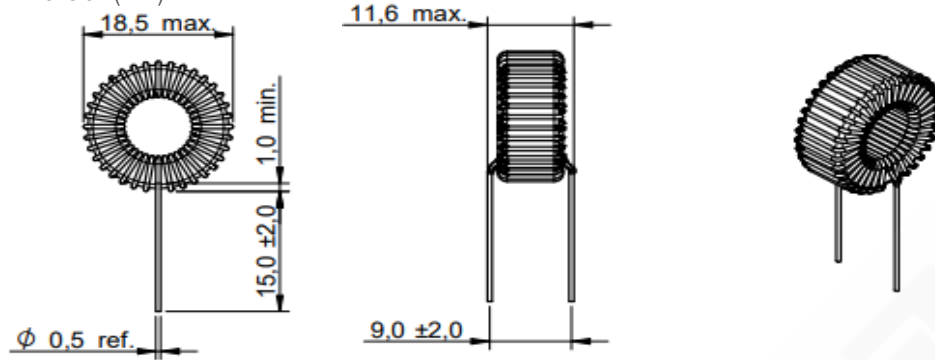
Test Condition

- ☆ 电感测试条件为 10KHz / 5.0mA (25°C)  
Inductance measure condition at 10KHz / 5.0mA (25°C)
- ☆ 工作温度: -40°C ~ +105°C  
Operating Temperature: -40°C ~ +105°C
- ☆ 温升电流: 使产品温度上升到ΔT40°C时所加载的实际直流电流值 (Ta=25°C)。  
Rated Current: The actual value of DC current when the temperature rise is ΔT40°C (Ta=25°C)



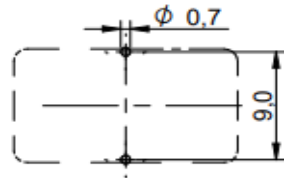
### 尺寸

Dimension (mm)



### 焊盘推荐

Land Pattern Recommended (mm)



### 示意图

Schematics



### 电性特性

Electrical Properties

型号 Part No.	电感值 Inductance L (μH)	直流电阻 DCResistance DCRmax (mΩ)	温升电流 Rated Current I <sub>R</sub> max (A)
FCLT1815-471M	470.00 ±20%	0.225	1.60

### 测试状态

Test Condition

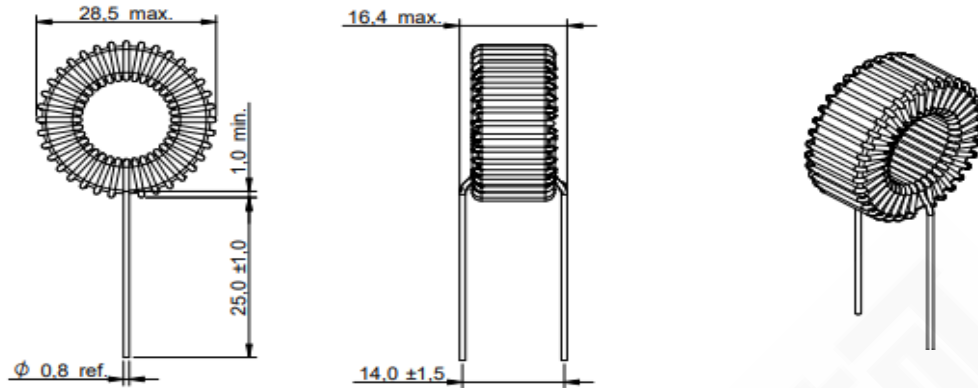
- ☆ 电感测试条件为 10KHz / 5.0mA (25°C)  
Inductance measure condition at 10KHz / 5.0mA (25°C)
- ☆ 工作温度: -40°C ~ +105°C  
Operating Temperature: -40°C ~ +105°C
- ☆ 温升电流: 使产品温度上升到ΔT40°C时所加载的实际直流电流值 (Ta=25°C)。  
Rated Current: The actual value of DC current when the temperature rise is ΔT40°C (Ta=25°C)





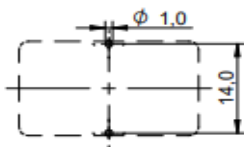
### 尺寸

Dimension (mm)



### 焊盘推荐

Land Pattern Recommended (mm)



### 示意图

Schematics



### 电性特性

Electrical Properties

型号 Part No.	电感值 Inductance L (μH)	直流电阻 DCResistance DCRmax (mΩ)	温升电流 Rated Current I <sub>R</sub> max (A)
FCLT2825-861M	860.00 ±20%	0.150	3.00

### 测试状态

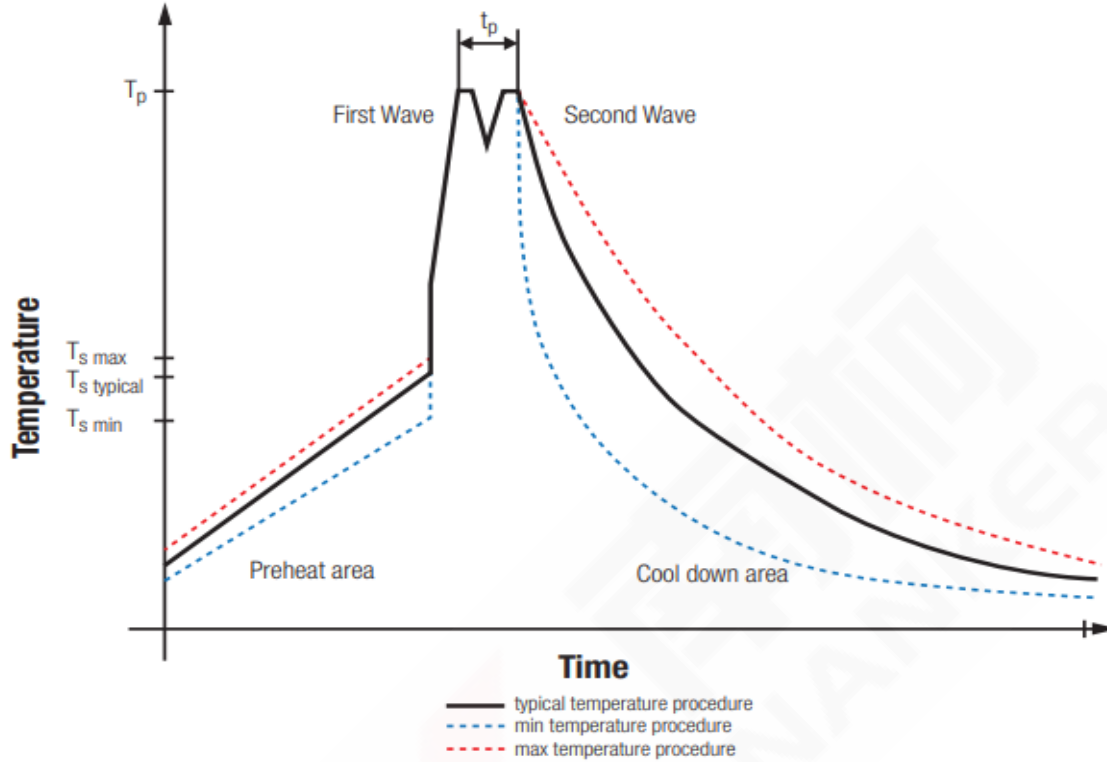
Test Condition

- ☆ 电感测试条件为 10KHz / 5.0mA (25°C)  
Inductance measure condition at 10KHz / 5.0mA (25°C)
- ☆ 工作温度: -40°C ~ +105°C  
Operating Temperature: -40°C ~ +105°C
- ☆ 温升电流: 使产品温度上升到ΔT40°C时所加载的实际直流电流值 (Ta=25°C)。  
Rated Current: The actual value of DC current when the temperature rise is ΔT40°C (Ta=25°C)



### 波峰焊线图

Classification Wave Soldering Profile



### 封装体峰值温度(T<sub>p</sub>)分类

Classification Reflow Soldering Profile:

Profile Feature		Pb-Free Assembly	Sn-Pb Assembly
Preheat Temperature Min	T <sub>s min</sub>	100°C	100°C
Preheat Temperature Typical	T <sub>s typical</sub>	120°C	120°C
Preheat Temperature Max	T <sub>s max</sub>	130°C	130°C
Preheat Time t <sub>s</sub> from T <sub>s min</sub> to T <sub>s max</sub>	t <sub>s</sub>	70 seconds	70 seconds
Ramp-up Rate	Δ T	150°C max	150°C max
Peak Temperature	T <sub>p</sub>	250°C ~ 260°C	235°C ~ 260°C
Time of actual peak temperature	t <sub>p</sub>	max. 10 seconds max. 5 seconds each wave	max. 10 seconds max. 5 seconds each wave
Ramp-down Rate, Min		~ 2K/seconds	~ 2K/seconds
Ramp-down Rate, Typical		~3.5K/seconds	~3.5K/seconds
Ramp-down Rate, Max		5K/seconds	5K/seconds
Time 25°C to 25°C		4 minutes	4 minutes

\* 波峰焊参照标准EN61760-1:2006。

Wave Soldering is refer to standard EN61760-1:2006